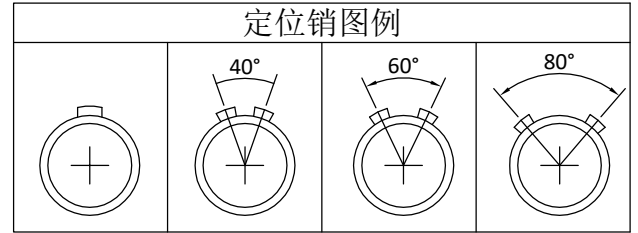
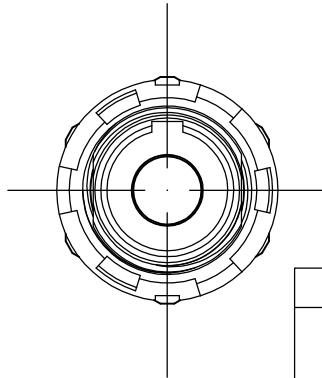
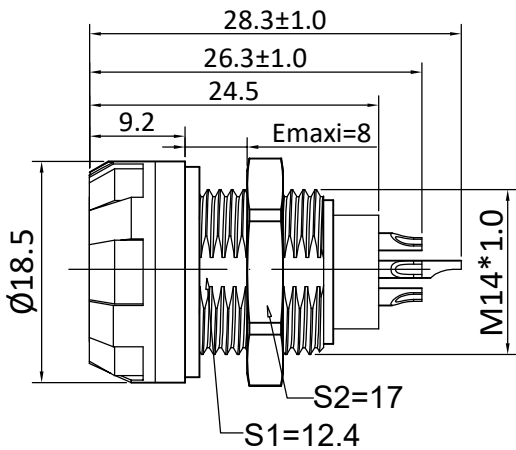


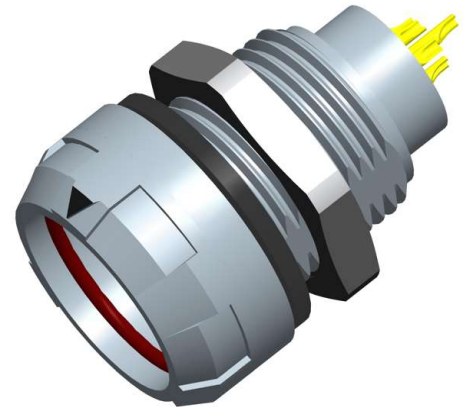
2D REFERENCE SIZE (UNIT: mm)



The unmarked dimensional tolerance is $\pm 0.2\text{mm}$



- HOUSING MATERIALS: ABC/PC&PSU.
- INSULATOR MATERIALS: PPS.
- CONTACTS MATERIALS: COPPER ALLOY
- MATING CYCLE: 2000 TIMES。(IEC 60512 test 9a)
- IP LEVEL: IP50。(IEC 60529)
- POERATING TEMPERATURE: $-40^{\circ}\text{C}\sim+85^{\circ}\text{C}$ 。(GB/T2423.22-IEC 60068-2-14)
- SALT SPRAY CORROSION: $>48\text{h}$ 。(IEC 60512-6 test 11f)
- Humidity (max): $\leq 95\%[\text{at } 60^{\circ}\text{C}]$ 。(GB/T2423.3-IEC60068-2-78)



Images is for illustrative purpose only

1P Series part numbering system :

FIXED SOCKET

SNG·1P308·AP*

MODEL

KEY:
G=0° ; A=40° ;
B=60° ; C=80° ;

SERIES

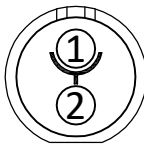
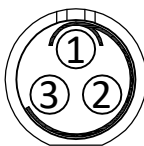

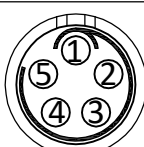
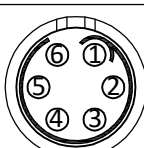

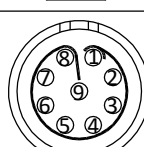
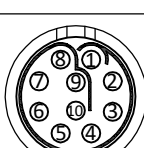
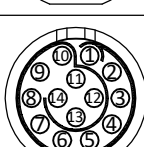
CONTACTS:3=MULTICORE;
08=8PINS (2~14PINS OPTIONAL)

HOUSING:
A=GREY;
W=WHITE;
L=BLACK;

HOUSING MATERIALS:
P=ABS/PC;S=PSU;

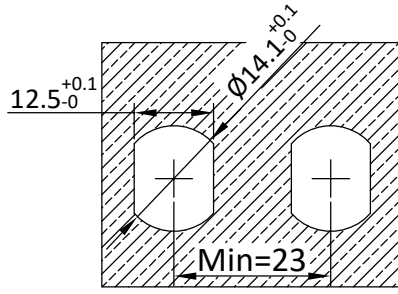
CONTACTS TYPE:
A=SOLDER PIN;L: SOLDER HOLES;
D=PCB PIN;N=PCB HOLES;
V=PCB ELBOW

*=Customers can choose the model according to their own needs

P/N	CORE	TYPE	PIN DIA (mm)	WORK VOLTAGE (KV rms)		RATED CURRENT (A)	CONTACT R ESISTANCE (mΩ)	CABLE (AWG)	
				CONTACTS- CONTACTS	CONTACTS- SHELL			min.	max.
SNG.1P302.AP*	2		1.3	1.2	/	14	5	26	18
SNG.1P303.AP*	3		1.3	1.2	/	14	5	26	18
SNG.1P304.AP*	4		0.9	1.2	/	10	6	32	20
SNG.1P305.AP*	5		0.9	1.05	/	9	6	32	20
SNG.1P306.AP*	6		0.7	1.05	/	7	7.5	32	22
SNG.1P307.AP*	7		0.7	1.05	/	7	7.5	32	22
SNG.1P308.AP*	8		0.7	1.05	/	5	7.5	32	22
SNG.1P309.AP*	9		0.5	0.85	/	2.5	10	32	22
SNG.1P310.AP*	10		0.5	0.85	/	2	10	32	28
SNG.1P314.AP*	14		0.5	0.6	/	1.5	10	32	28

*=Customers can choose the model according to their own needs

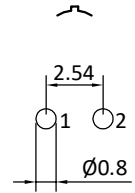
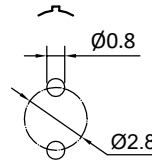
NOTE: SOCKET WITH ELBOW(90°)CONTACT FOR PRINTED CIRCUIT, RATED CURRENT:6A



1P SERIES PANEL HOLES SIZE

PCB STRAIGHT

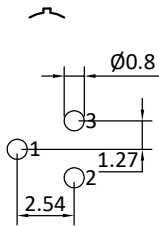
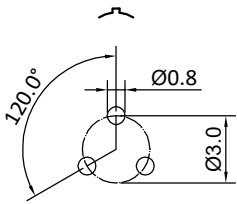
PCB ELBOW



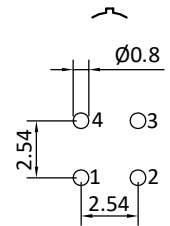
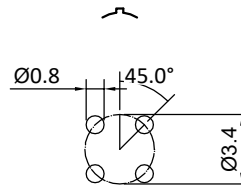
PCB STRAIGHT

PCB ELBOW

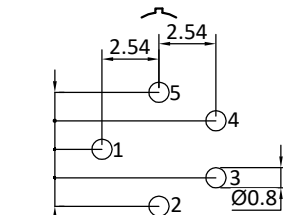
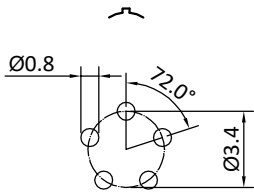
02



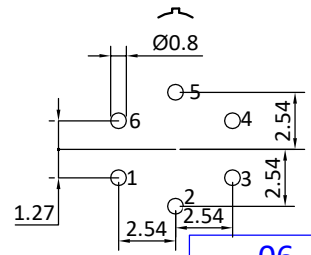
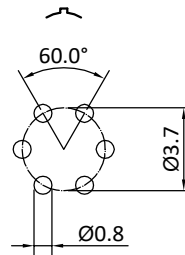
03



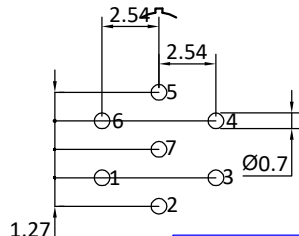
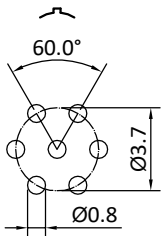
04



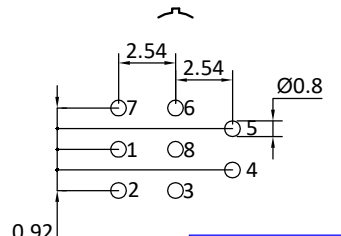
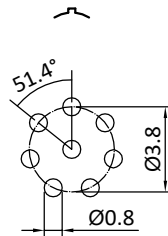
05



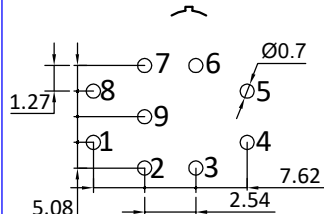
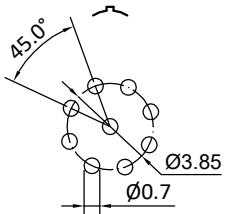
06



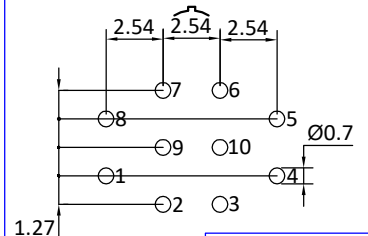
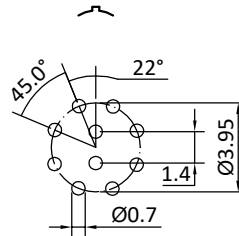
07



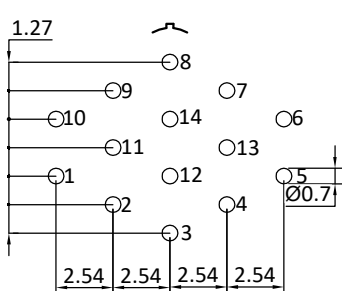
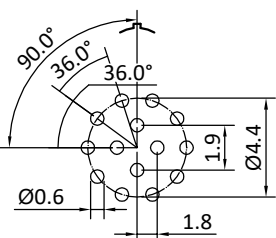
08



9



10



14